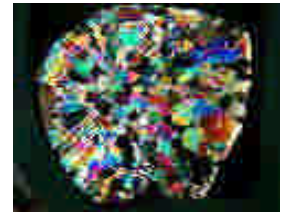




Let's Examine the Icicle Section



Point

Crystal of Ice



Materials



- Icicle
- 2 Polarization board
(You can buy from the teaching materials shop or Internet)
- Saw
- towel
- Working gloves
- Tweezers (Plastic)

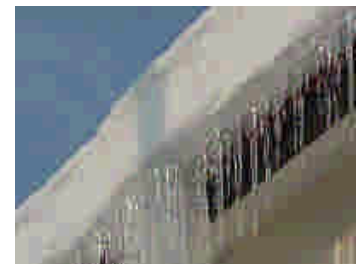


How to do the experiment

Preparing for experiment (Slicing the ice)

Get the icicle from outside.

- 1 ※ It's dangerous to get icicle, so you have to ask help from an adult to get it.



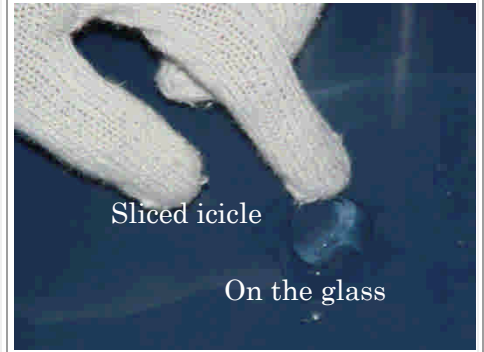
Cut the icicle(5~10 mm) using saw.

- 2 ※ You have to be careful to use the saw. You better ask the help of an adult.



3

Thin down icicle on a flat desk or glass until its thickness is less than 2mm.



Experiment

1

Cross 2 polarization boards and rotate one of it so that no light can penetrate on it.

2

Pick the icicle with tweezers and insert between two polarization boards. Let's look across it!

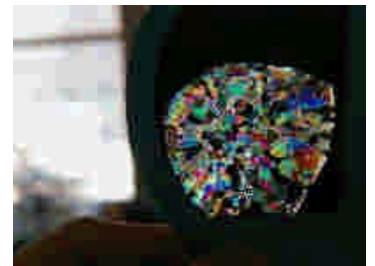


3

Rotate the icicle ! !

✘ You can see the expansion of the crystal using 2 polarization board.

Icicle expands from center outward.



I can see it ! !

 Progress

How does a vertical cross section of icicle would look like?

You can try using other kinds of ice (Ex, in the refrigerator ,bucket ice)